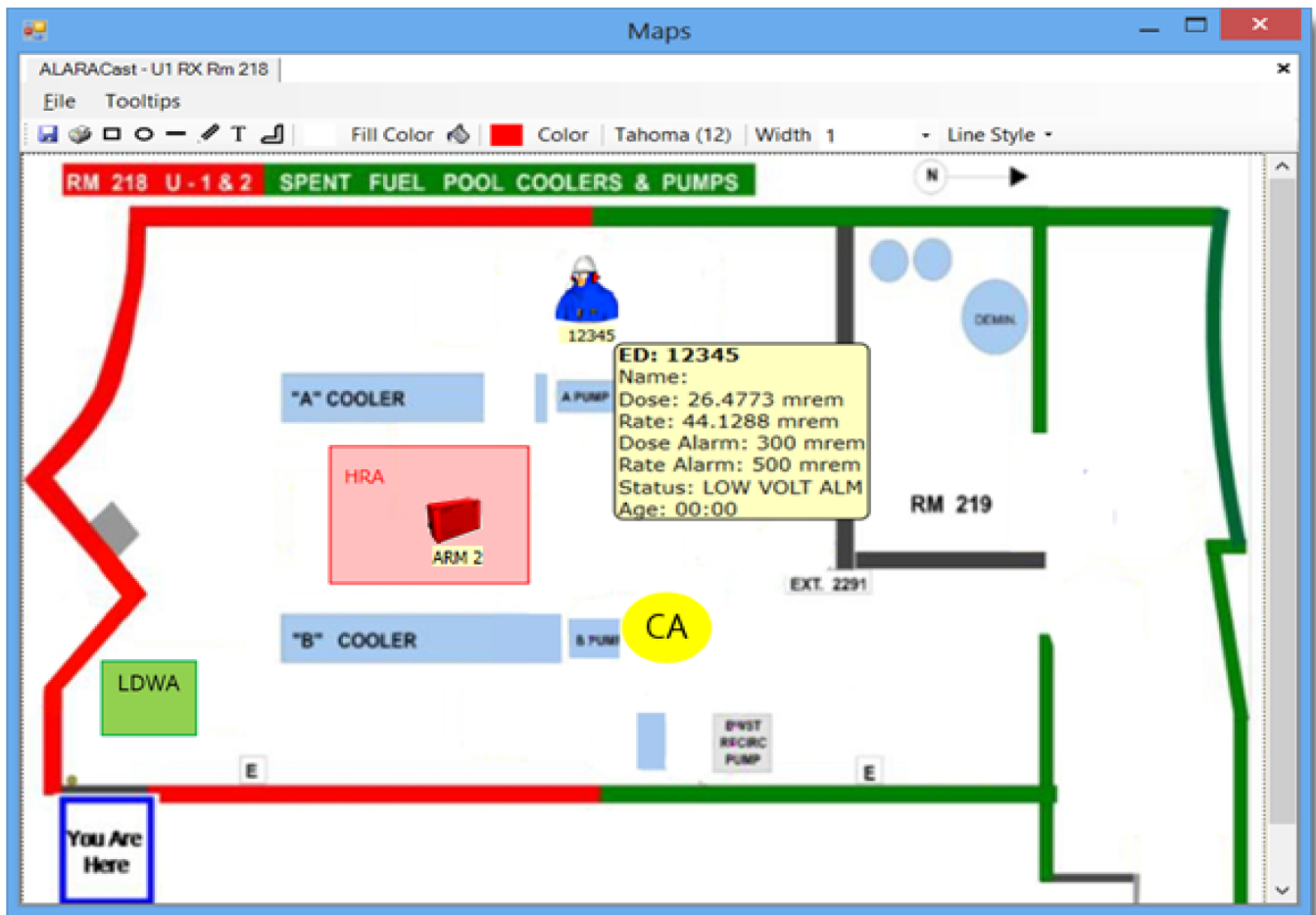


# ALARACast

ALARACast is the new telemetry software with many influences and familiar functionality of RADS telemetry, is full of great new features and an up-to-date look. ALARACast is the most advanced yet user friendly telemetry software package available today.



## GUI Map Interface:

Drag and drop ED's, ARM's, and CAM's to display live time data on your map and gives you Status Board Info.

Graphic interface tools to customize the map with important environmental information.

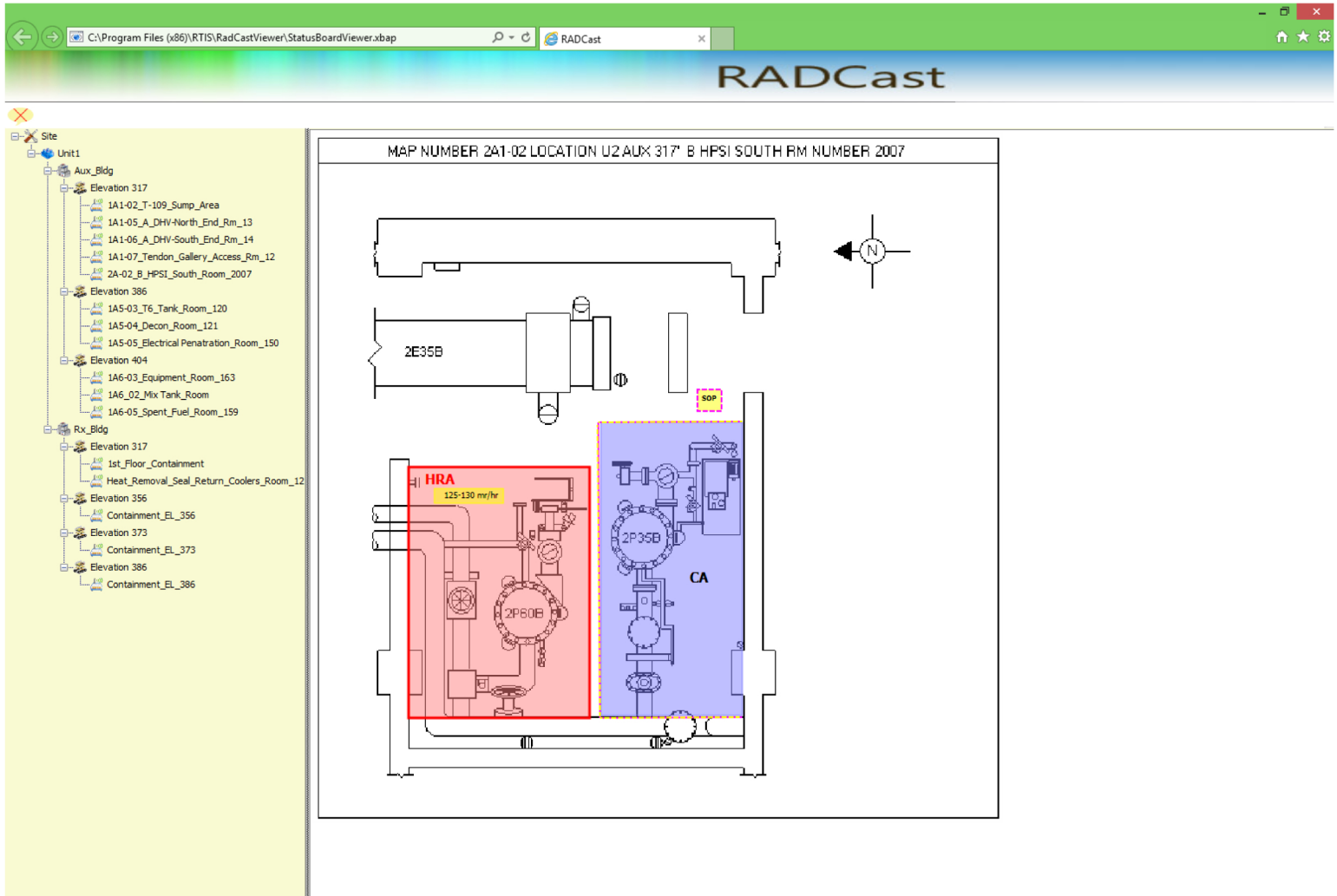
Tooltips can show your instrument data always or keep hidden and display with a mouse over.

**Direct Scientific [www.drct.com](http://www.drct.com)**

**tel 310 589-0601**

**email: [sales@drct.com](mailto:sales@drct.com)**

# ALARACast



## RADCast: ALARACast's Status Board Application

I.I.S. RADCast is a status board view of the latest radiological data imported from your GUI map interface in ALARACast. The ALARACast maps are viewed in a web link browser that all site desktops can access.

**Direct Scientific [www.drct.com](http://www.drct.com)**

**tel 310 589-0601**

**email: [sales@drct.com](mailto:sales@drct.com)**

# ALARACast

**JOB - Fuel Lift Inspection**

File Edit Maps Cameras Job Log Report Options Help

Microsoft Sans Serif (8)

Name	ED#	Dose	Rate	Dose Alarm	Rate Alarm	Age	Location	Actual Time	Stay Time
Lora Mantel	2	37	375	100	1000	25.56	Refuel Bridge	00:00:00	0
Chris Whitford	3	37	373	125	250	25.57	Refuel Bridge	00:00:00	0

Personnel

Location	ARM#	Rate	Alarm	Status	Age	Stop Watch
Refuel Bridge	12	316	350	OK	00:04	
Refuel Bridge	3	313	350	OK	00:04	

ARM's

Location	CAM#	DAC Hours	DACS	DAC Hour Alarm	DAC Alarm	Status	Age	Stop Watch
Refuel Bridge Deck	5	0.00E+000	0.00E+000	0.00E+000	0.00E+000	OK	00:04	
Refuel Bridge	16	0.00E+000	0.00E+000	0.00E+000	0.00E+000	OK	00:05	

CAM's

Electronic Dosimeter

ED ARM CAM

System Status 14:29:36

Separate device sections can be individually customized to display only field data and it's order you wish to view



One click icons of the most commonly used commands

**Grid Field Selection**

- ☐ Actual Time
- ☒ Age
- ☐ Body Temperat
- ☐ COMM
- ☒ Comments
- ☒ Dose
- ☒ Dose Alarm
- ☒ ED#
- ☐ Group
- ☒ Location
- ☒ Name

The Grid Field Selector:

Hide or display each data field for each device section and add new data value with installed spares

**Log : Under Vessel**

Title: Under Vessel

Format Insert

**B I U**

Text Style

5/6/2011 12:10:09 PM  
Under Vessel Inspection begins, Engineering called in for an immediate mod eval.

5/6/2011 2:14:05 PM  
Under Vessel Inspection Eval Mod Completed by George Wilson (Engineering).

5/6/2011 3:45:16 PM  
Under Vessel Inspection RWP 123-Task 2 Complete.

5/6/2011 5:15:46 PM  
Turnover brief notes:  
After initial mod eval was completed by engineering it was smooth sailing the rest of the way, RWP 123-Task 2 Completed. Ready for RWP 123-Task 3. Second Shift

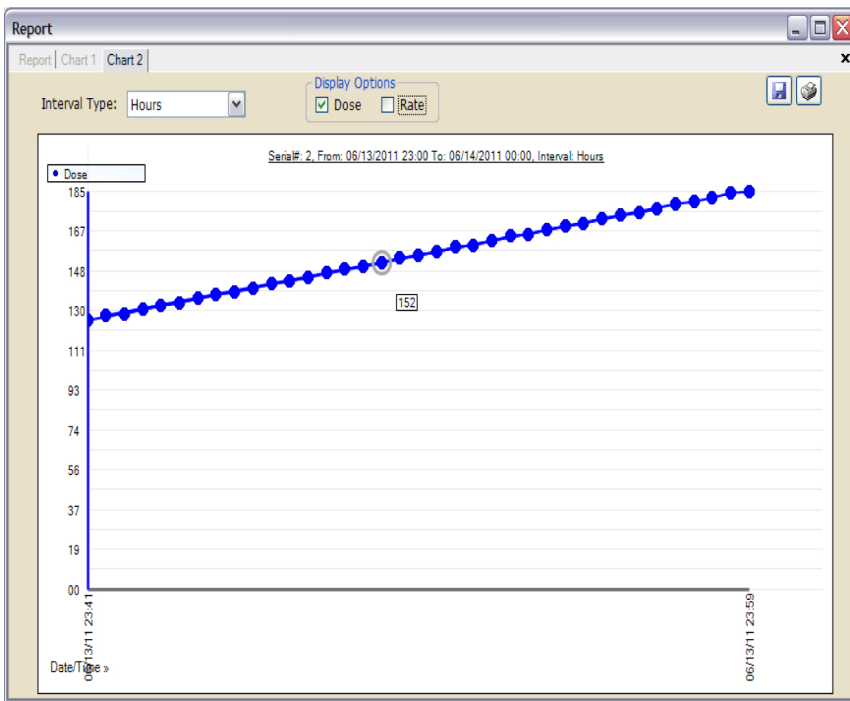
Save Close

## Job Log:

Keep a continuous log of events and important job associated data. Date/time stamp, insert graphics, maps, photos, Omnicast Live View screen shot. Great for turnover briefing.

**Direct Scientific [www.drct.com](http://www.drct.com)**  
**tel 310 589-0601**  
**email: [sales@drct.com](mailto:sales@drct.com)**

# ALARACast



## Reports:

Access graphs and reports for instant tracking and trending within the telemetry interface. The field chooser let's you narrow or broaden your area of interest.

Transaction list : Drywell Rx Recirc Pump Replacement

Date/Time	User	Action	Information
6/7/2011 10:49:33 AM	cwhitford	Acknowledge	Acknowledged alarm on device 4.
6/7/2011 10:49:30 AM	cwhitford	Acknowledge	Acknowledged alarm on device 3.
6/7/2011 10:49:25 AM	cwhitford	Acknowledge	Acknowledged alarm on device 2.
6/7/2011 10:49:21 AM	cwhitford	Acknowledge	Acknowledged alarm on device 1.
6/7/2011 10:48:53 AM	cwhitford	Alarm	Device 5 in Status Alarm.
6/7/2011 10:48:43 AM	cwhitford	Alarm	Device 5 in Status Alarm.
6/7/2011 10:48:28 AM	cwhitford	Alarm	Device 4 in Status Alarm.
6/7/2011 10:48:23 AM	cwhitford	Alarm	Device 3 in Status Alarm.
6/7/2011 10:48:18 AM	cwhitford	Alarm	Device 2 in Status Alarm.
6/7/2011 10:48:13 AM	cwhitford	Alarm	Device 1 in Status Alarm.
6/7/2011 10:34:38 AM	cwhitford	Alarm	Device 3 in Rate Alarm. Rate Value: 640.
6/7/2011 10:34:28 AM	cwhitford	Alarm	Device 1 in Rate Alarm. Rate Value: 640.
6/7/2011 10:34:28 AM	cwhitford	Alarm	Device 1 in Dose Alarm. Dose Value: 160.
6/7/2011 10:29:55 AM	cwhitford	Map Save	Map 1 is saved.
6/7/2011 10:22:43 AM	cwhitford	Alert	Device 3 in Rate Alert. Rate Value: 480.
6/7/2011 10:22:33 AM	cwhitford	Alert	Device 1 in Rate Alert. Rate Value: 480.
6/7/2011 10:22:33 AM	cwhitford	Alert	Device 1 in Dose Alert. Dose Value: 120.
6/7/2011 10:13:47 AM	cwhitford	Acknowledge	Acknowledged alarm on device 4.
6/7/2011 10:13:42 AM	cwhitford	Acknowledge	Acknowledged alarm on device 2.
6/7/2011 09:46:12 AM	cwhitford	Map Save	Map 1 is saved.
6/7/2011 09:42:17 AM	cwhitford	Map Save	Map 1 is saved.
6/7/2011 09:34:43 AM	cwhitford	Alarm	Device 4 in Dose Alarm. Dose Value: 53.
6/7/2011 09:34:43 AM	cwhitford	Alarm	Device 3 in Dose Alarm. Dose Value: 72.
6/7/2011 09:34:43 AM	cwhitford	Alarm	Device 2 in Dose Alarm. Dose Value: 168.

Legend: Device Alarm (Orange), Device Alert (Yellow), Acknowledge (Grey), Config Change (Blue), Device Add (Light Blue), Device Delete (Pink), Job Create (Green), Job Save (Dark Green), Job Delete (Light Green), Map Save (White)

## Transaction List:

Give management the ability to pin point the event or events you need to find from the user, action, day, down to the second it took place.

Direct Scientific [www.drct.com](http://www.drct.com)

tel 310 589-0601

email: [sales@drct.com](mailto:sales@drct.com)